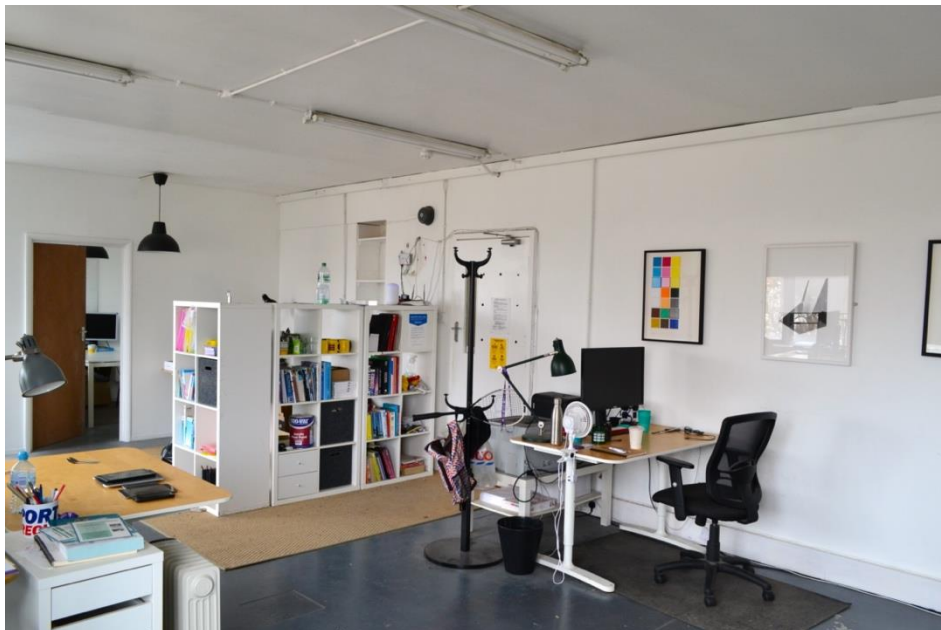


## 60+ sq m studio/office available at Phoenix Art Space Brighton from May 2023 (Studio 3S1)

We have a beautiful light filled office/workspace/studio at Phoenix with its own meeting /storage space. We are looking for a new tenant who would be interested in taking it on. The workspace is situated within the heart of our artists community, and a short walking distance from the centre of Brighton.

**We are keen to hear from artists, artists collectives or arts organisations who can demonstrate a commitment to the education and promotion of the arts.** If you would like to apply as a consortium this would also be welcome.

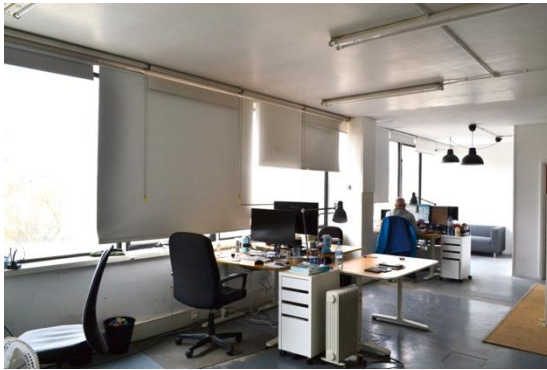
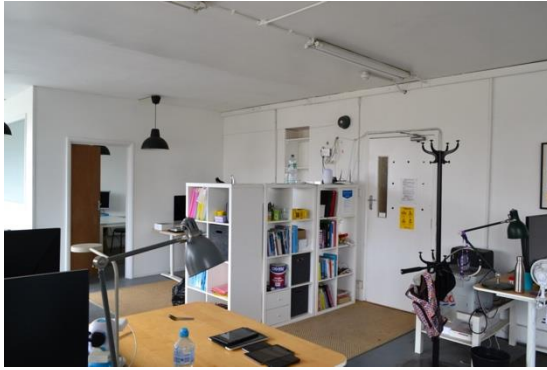


*Shot of the studio (currently occupied)*

### **About the workspace**

The workspace is on the third floor of our building at 10-14 Waterloo Place, Brighton, accessed via stairs. It has built-in heating throughout the space, on a meter, and views across the rooftops of Brighton. There is access to a kitchenette and toilets on the same floor. The workspace is well equipped with electricity sockets and currently designed as an open plan working space. Built within the workspace is a small meeting room or storage space, with a window.

The monthly rent is £ 1100 excluding energy, payable by standing order. Energy is billed quarterly based on meter readings taken by our Buildings team.



*Shot of the studio (currently occupied) showing views to and from the meeting room and seating area.*

Please note that our studios are unfortunately not currently wheelchair accessible due to the age of our building and non-regulation compliant existing lift. Our ground floor gallery, workshop spaces and café are wheelchair accessible via a ramp and we are committed to increasing our accessibility wherever we can.

To find out more or to view the studio please contact Lauren Mason  
[laurenmason@phoenixartspace.org](mailto:laurenmason@phoenixartspace.org)